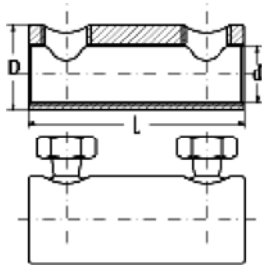
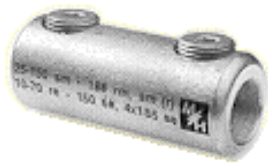
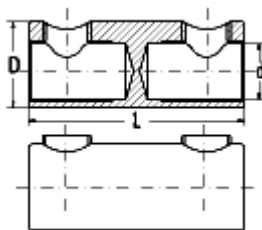


Mechanical Connector 0.6/1kV with 2 shear-off hexagon socket screws



Though Connector Style



Barrier Connector Style

Utilux mechanical connectors are a reliable, cost saving method of connecting different conductor cross sections and conductor materials upto 1kV

Conductor Body

- ... High strength aluminum alloy
- ... Conductor channel is provided with transversal grooves
- ... Though connector styles have inspection hole in middle of the connector body
- ... Barrier links suitable for connection of XLPE to Paper Lead cables

Shear Bolts

- ... Electro-tinned plated
- ... Lubricated with special grease

Advantages of shear technology

- ... Easy to install
- ... Given torque shear-off ratio
- ... No specialised compression tooling and dies required

Economy

- ... Lower stock holding as small range of connectors required
- ... No expensive hydraulic tooling required

Safety

- ... Tested according to VDE0220/IEC1238

Sealant used on connectors

- ... Raychem sealant products – WCSM (heavy walled sealant lined) heat shrink, Gelwrap

Abbreviations used on connectors

- ... **rm** = round stranded
- ... **sm** = sector stranded
- ... **re** = round solid
- ... **se** = sector solid

Catalogue Number	Dimension			Conductor cross Section Sq mm (min – max)				Male Socket Width (mm)	Recommended 'Raychem' Heat Shrink Product
	L	D	d	sm	se	rm	re		
Though Connectors									
8-1198997-5 HEL-4897-Z-AK	40	16	9	4-35	4-35	4-35	4-35	4	WCSM 34/8
0-1198993-8 HEL-4887-Z-AK	55	25	14	25-70	35-95	16-70	16-95	5	WCSM 48/12
9-1198996-2 HEL-4888-Z-AK	80	32	20	25-185	35-185	35-185	10-95	6	WCSM 56/16
Barrier Connectors									
8-1199006-5 HEL-4897-T-Z-AK	40	16	9	4-35	4-35	4-35	4-35	4	WCSM 34/8
1-1199008-6 HEL-4896-Z-AK	55	25	14	25-70	35-95	16-70	16-95	5	WCSM 48/12
9-1199009-9 HEL-4893-Z-AK	80	32	20	25-185	35-185	35-185	10-95	6	WCSM 56/16

All of the above information, including drawings, illustrations and graphic designs, reflects our present understanding and is to the best of our knowledge and belief correct and reliable. Users, however, should independently evaluate the suitability of each product for the desired application. Under no circumstances does this constitute an assurance of any particular quality or performance. Such an assurance is only provided in the context of our product specifications or explicit contractual arrangements. Our liability for these products is set forth in our standard terms and conditions of sale. ALR, AMP, AXICOM, B&H, Bowthorpe EMP, Critchley, Dorman Smith, Dulmison, Hellstern, La Prairie, Morlynn, Raychem, SIMEL, SUCOFIT and Utilux are trademarks.